

Additional Information:

Arrivals & Departures:

Check In time is 14h00 and Check Out time is 10h00.

Early arrivals & late departures may be arranged at an additional admin fee and should be made no less than 24 hours in advance. Please note that this arrangement is subject to the current occupation roster.

Security & Keys:

The keys and access cards to the Estate & Beach Club will be in an envelope at the Body Corporate Building.

Directions:

Take the N2 South towards Port Shepstone. Pass the old Airport, Amanzimtoti and then Scottburgh. Approximately 15min after the Scottburgh off ramp is a sign to Selborne Park Golf Estate. Take the Sezela / Bazley Beach off ramp. At the top of the off ramp, turn left & follow this road for approximately 4.5km until you reach Selborne Park Golf Estate on your left hand side. You will be required to sign in and then proceed to the Body Corporate Building.



Reservations: Pauline - 083 63 9330



Pettigrew's Place

Villa A31, Selborne Park Golf Estate
Old Main Road, Pennington
Hibiscus South Coast
KwaZulu-Natal

Tel: 083 263 9330

Pettigrew's Place

Luxury Golfer's Retreat at Selborne Estate



The House

Pettigrew's Place is an exclusive three storey home on Selborne Park Golf Estate.

This self-catering house, situated on a large property, offers guests a feeling of tranquil luxury and above all; privacy.



The spacious open-plan lounge has a large flat screen TV with full DSTV Bouquet and state of the art CD player which links to a surround sound system throughout the house, so remember those favourite CDs.



Leading off from the lounge is a Billiard Room with TV, Dining Room with eight seater table and chairs and Bar / Entertainment Area.



The reception areas lead off onto a secluded patio which is furnished with a comfortable cane lounge suite, as well as the outdoor dining area which has an eight seater table and chairs and built in braai.



The Kitchen is fully equipped with washing machine, tumble dryer, automatic dishwasher, fridge/freezer with ice-maker, oven, microwave, coffee machine, a breakfast nook with table and benches and all required crockery, cutlery and glassware.

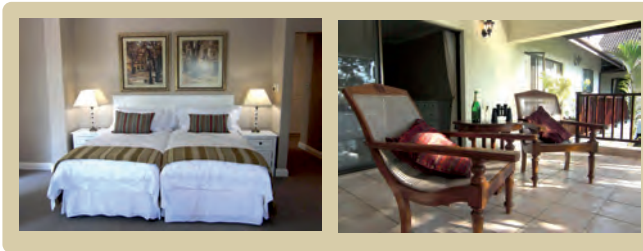


Tastefully decorated in natural tones with touches of vibrant colour, the house is fully airconditioned and can cater to fourteen people.

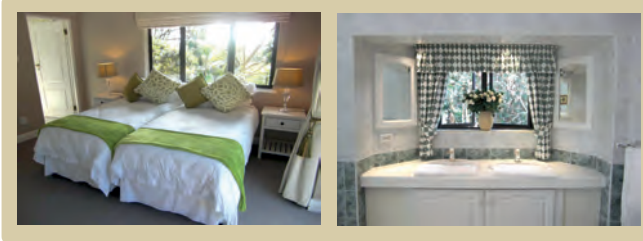
The Bedrooms

Pettigrew's Place has 5 large bedrooms, each with its own TV, glorious views of the surrounding property and most with access to their own private balconies.

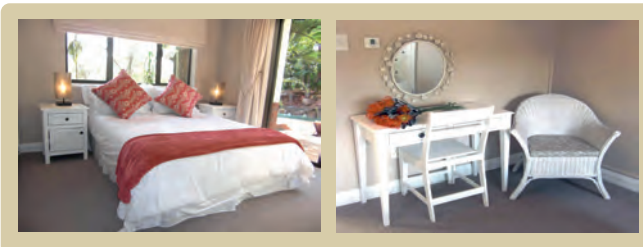
The bedrooms are furnished with comfortable beds fitted with crisp, clean bedding; bed-side tables with night lamps, a dresser with drawers and chairs or settees.



Upstairs houses four spacious en-suite bedrooms, a small bunk room suitable for two children and a TV room which has a sofa-bed that sleeps two people.



The fifth bedroom is downstairs, has a queen size bed and leads off to the swimming pool area.



Facilities

The house is situated on a large property with ample space for family-fun activities.

The beautiful garden, surrounded by indigenous vegetation, has play area with swings and a trampoline allowing for hours of fun for kids, big and small alike.

The immediate garden, just off the house, boasts a large pool with a natural rock feature. The swimming pool area is furnished with stylish chaise lounges, perfect for spending leisurely hours in the sunshine.

The garden also has a Jacuzzi overlooking the surrounding forestry - a fabulous setting for a glass of bubbly as the sun goes down.

Guests at Pettigrew's Place also have access to the Beach Club where there is a private pool with loungers and electronic access to the beach with a security guard on duty at all times. The beach is about a 5min drive from Selborne Park.

A golf cart is available for use during your stay to those with a driver's license and may be used on Selborne Golf Course at a trail fee of R30 payable to the Golf Club.

